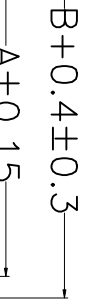
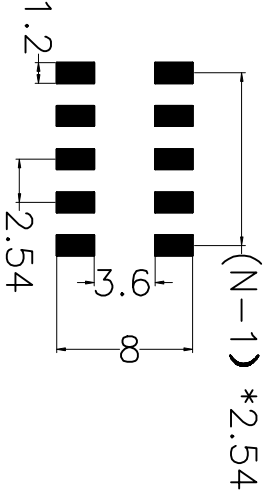
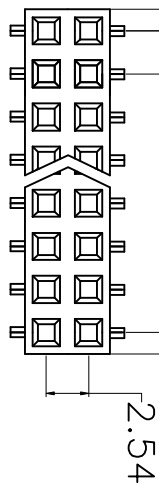


1 2 3 4 5 6 7 8 9



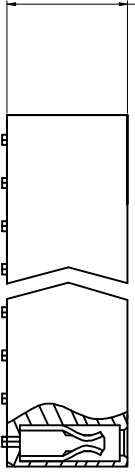
H=3.5mm, 5.0mm, 5.7mm, 7.1mm, 8.5mm



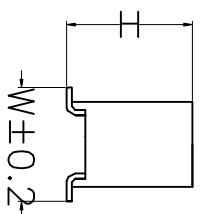
**SPECIFICATIONS**  
 Current Rating: 3Amps  
 Insulation Resistance: 1000MΩ min  
 Withstanding Voltage: 1000VAC  
 Contact Resistance: 20mΩ max  
 Operating Temperature: -40° C to +105° C  
 Standard: PBT  
 Contact Material: Brass  
 Contact Plating: Au or Sn Over Ni  
 Max. Processing Temp: 200° C for 30-60second  
 (220° C for 10second)

Code Description  
**CH-254-FH-1-YX-71-N-67-60-A**

- (1) Pin Spacing: 254=2.54mm
- (2) Product Name: FH=Female Header
- (3) No. of Rows: 1=Single 2=Dual Row
- (4) No. of Pins Per Row: 1-40
- (5) Insulator Material Height: 50=5.0mm; 71=7.1mm
- (6) Contact Type: S=Straight; R=Right/Angle; K=SMT
- (7) Contact Material Length: 67=6.7mm
- (8) Contact Plating: SN=Tin; 60=Gold Flash; SO=Gold Flash; Tin; AU08=Au0.8μ'
- (9) Insulator Material Option:  
 A=BK-PBT; B=BK-PA6T; C=BK-P446; D=BK-LCP; S=Special



SQ0.5\*0.25



# 慈溪慈惠电子元件厂

## Cixi CiHui Electronic Components Factory

UNLESS OTHERWISE SPECIFIED TOLERANCE

X	: ±0.3	X°	: ±5°
X.X	: ±0.2	X.X°	: ±1°
X.XX	: ±0.2	X.XX°	: ±0.5°

DRAWN NAME: CH-254-FH-2-YX-H-N-72-60-A

SIZE	A4	SCALE	N:1	PRODUCT	
REV	A	UNIT	mm	PROJECT	⊕
				PAGE	1/1

CHECKED LUD SANG HUI DATE 05/28 CHECKED DATE /

No. of	DIN. A	DIN. B	No. of	DIN. A	DIN. B	No. of	DIN. A	DIN. B	No. of	DIN. A	DIN. B	No. of	DIN. A	DIN. B
1	0.00	2.54	11	25.40	27.94	21	50.80	53.35	31	76.20	78.74			
2	2.54	5.08	12	27.94	30.48	22	53.35	55.88	32	78.74	81.28			
3	5.08	7.62	13	30.48	33.02	23	55.88	58.42	33	81.28	83.82			
4	7.62	10.16	14	33.02	35.56	24	58.42	60.96	34	83.82	86.36			
5	10.16	12.70	15	35.56	38.10	25	60.96	63.50	35	86.36	88.90			
6	12.70	15.24	16	38.10	40.64	26	63.50	66.04	36	88.90	91.44			
7	15.24	17.78	17	40.64	43.18	27	66.04	68.58	37	91.44	93.98			
8	17.78	20.32	18	43.18	45.72	28	68.58	71.12	38	93.98	96.62			
9	20.32	22.86	19	45.72	48.26	29	71.12	73.66	39	96.62	99.06			
10	22.86	25.40	20	48.26	50.80	30	73.66	76.20	40	99.06	101.6			